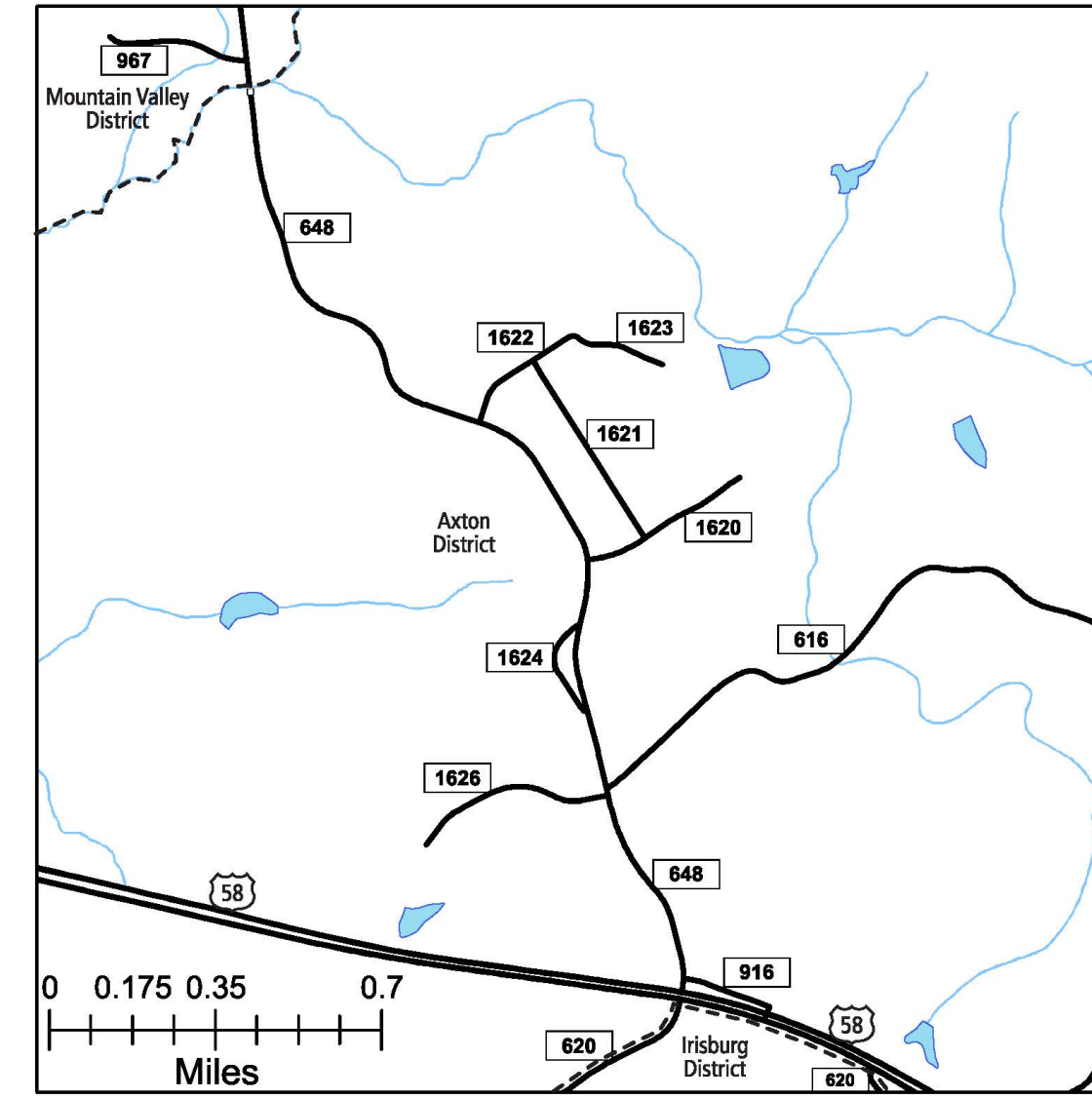
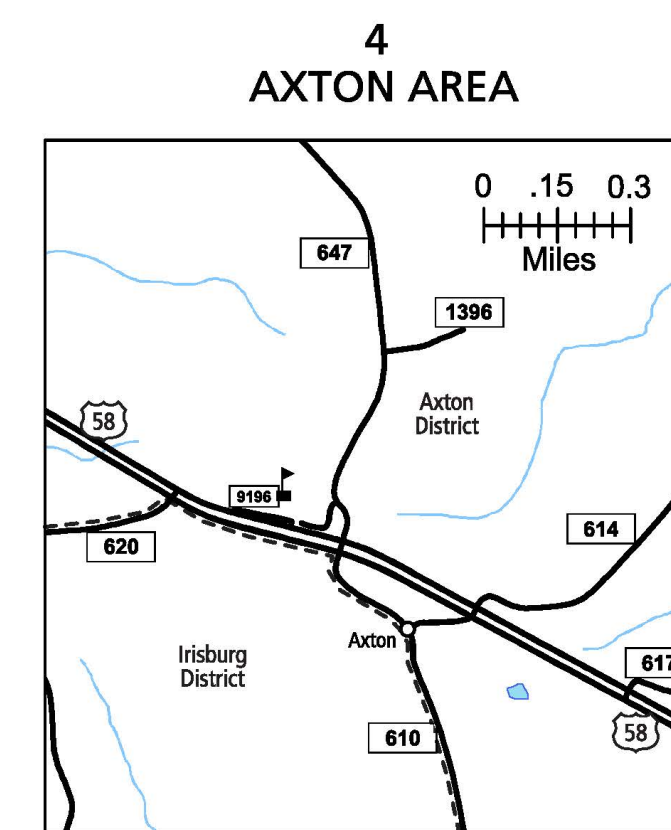


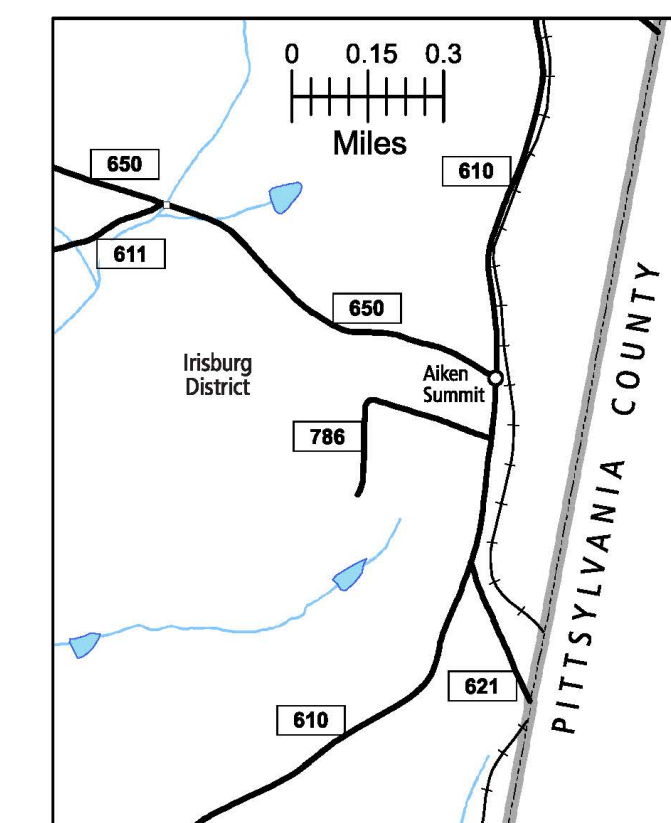
1
BASSETT AREA



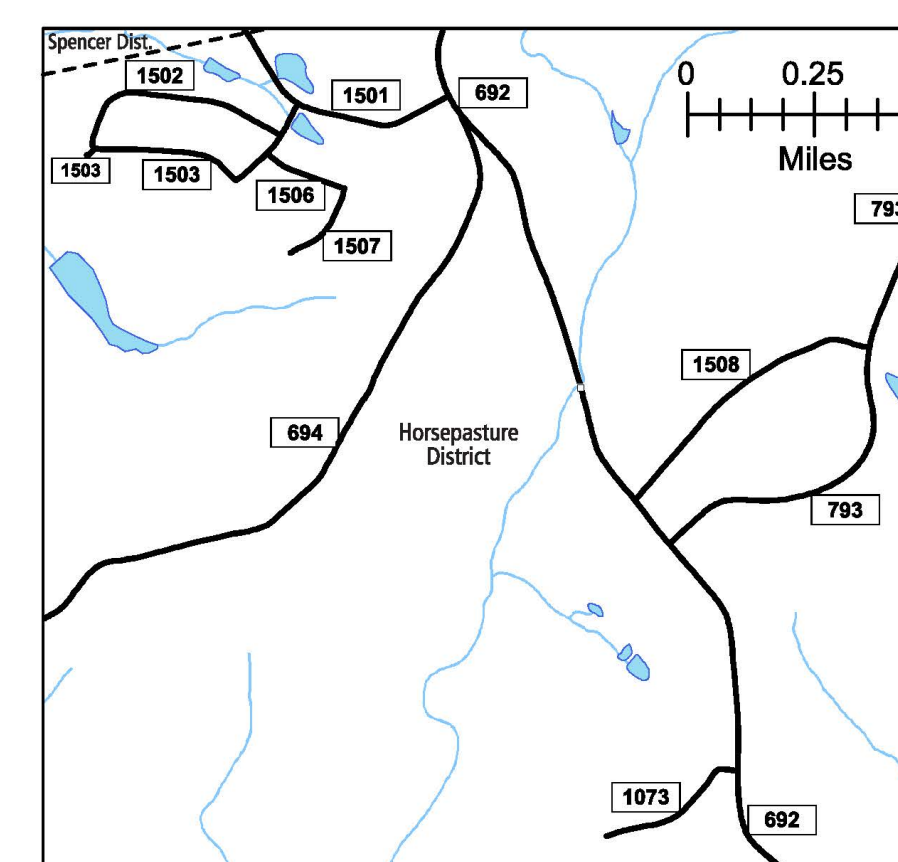
3
PIEDMONT ESTATES AREA



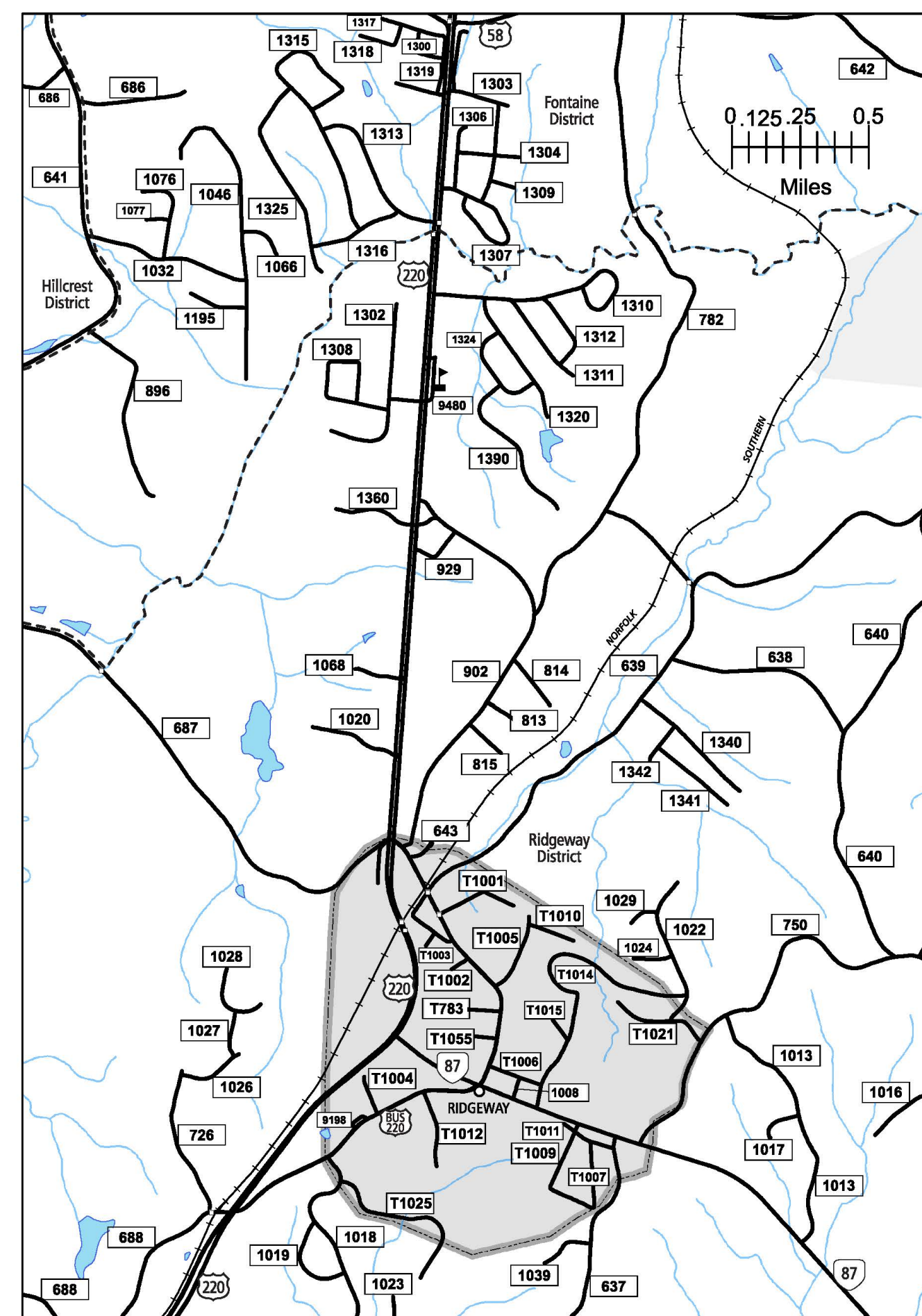
4
AXTON AREA



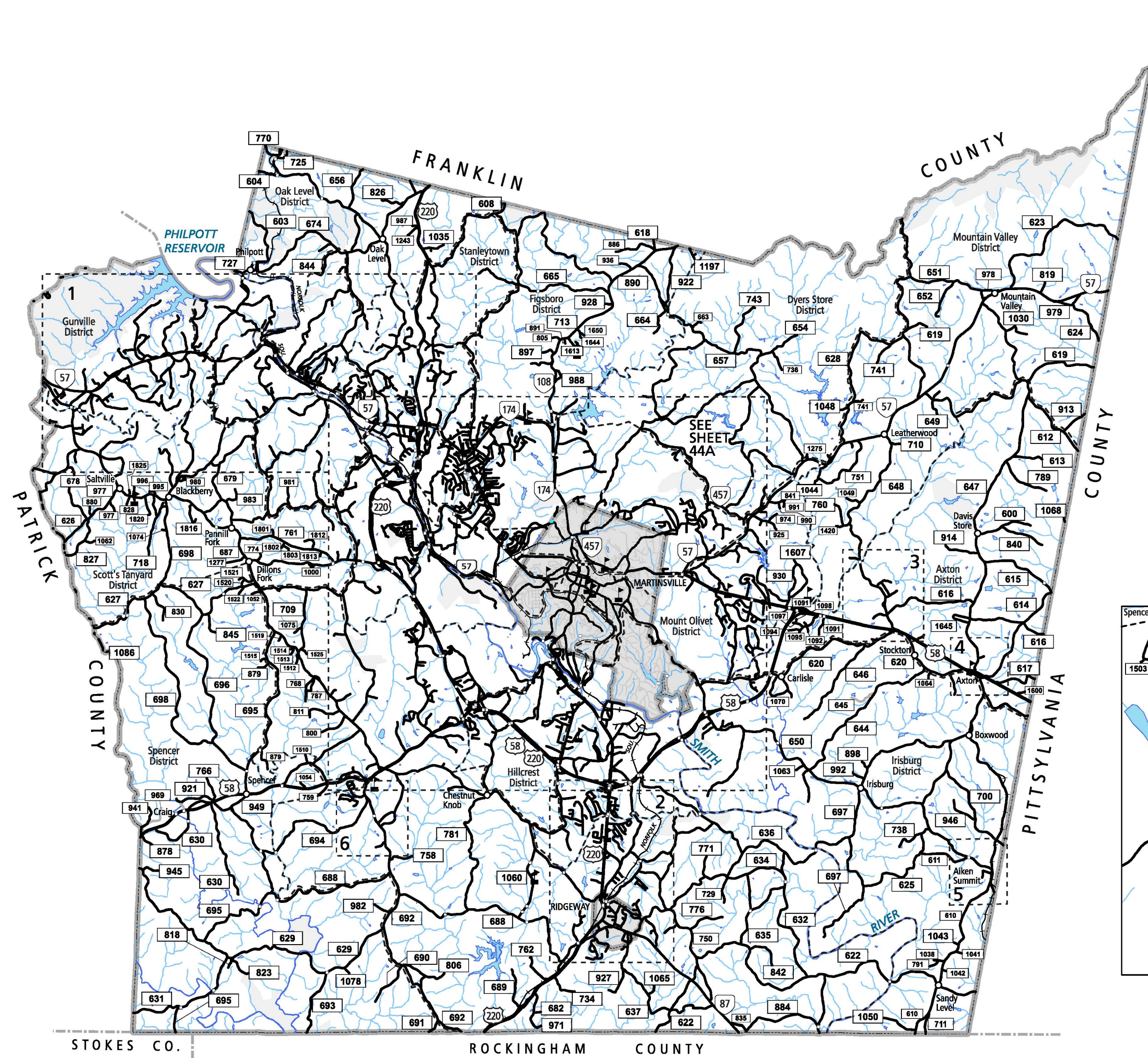
5
AIKEN SUMMIT AREA




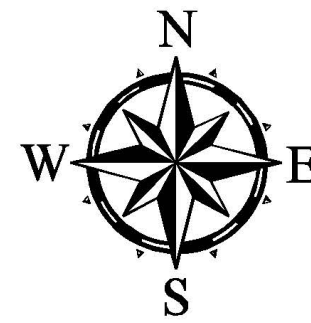
6
AREA S. W. OF HORSE PASTURE



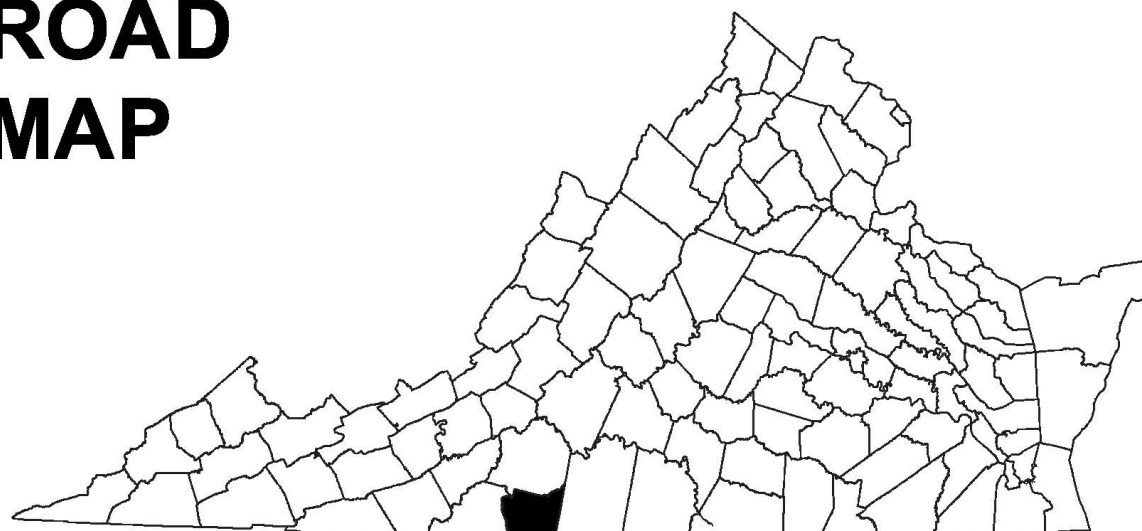
2
RIDGEWAY AREA



HENRY COUNTY, VA

COUNTY ROAD MAP



HENRY COUNTY

ROAD CLASSIFICATIONS		MISCELLANEOUS	
	Frontage Road		Schools
	Secondary Route		Seaports
	State Route		Park_RideLots
	U.S. Route	AIRPORTS	
	Urban Road		Commercial
	LightSurface		General
	DividedHwyInterstate		Military
	AllWeatherSurface	RAILROADS	
	Unsurfaced		Metro
	otherSurface		VARailroads
	BikeRoutes		Park_N_Ride
	AppalachianTrail	BOUNDARIES	
	Scenic Roads		MilitaryAreas
			MagisterialDistricts
			Incorp_Areas
			Natural_LandCover

Additional ROAD CLASSIFICATION (Post 2019)

Hard-surface



The accuracy or completeness of this map is not guaranteed or warranted. Map depicts state-maintained highway network as of May 1, 2021. Copyright © 2021 by Commonwealth of Virginia Department of Transportation. All Rights Reserved

AN INVENTORY OF STATE MAINTAINED ROADS

TOTAL PRIMARY MILEAGE IN COUNTY 12/31/11-107.08				SECONDARY MILEAGE TABULATION			
TYPE	7/1/1932	7/1/1934	7/1/1941	TYPE	12/31/1950	12/31/1960	12/31/1970
BIT SURF. PAVED	13.80	23.35	98.93	HARD SURFACE	187.45	382.86	445.25
GRAVEL, SOIL, ETC.	172.50	127.30	99.22	ALL WEATHER SURFACE	201.70	173.78	129.20
GRADES & DRAINAGE	73.80	72.30	141.97	LIGHT SURFACE	22.03	15.83	22.43
UNIMPROVED	194.80	211.70	102.70	UNSURFACED	81.28	10.84	0.46
TOTAL MILEAGE	451.90	434.65	440.82	TOTAL MILEAGE	452.46	583.10	597.34
							633.58
							680.84
							680.56
							688.75