

## Guidelines for Using the VDOT Primavera P6 Schedule Scrubber Tool

The VDOT Primavera P6 Schedule Scrubber tool is intended for use in scrubbing Primavera P6 “XER” files before the schedules are imported into a database to avoid contamination of existing global record/data. The process involves scrubbing the individual XER files to convert any global record into a project record or to append a global record ID with the specified Contract ID to make the global record project-specific. For instance, global calendars are converted into project calendars and global resource ID’s and other such global records are appended with the specified Contract ID to make them project-specific.

The following are guidelines for using the Scrubber:

1. Click on the link below to launch the VDOT Construction Scheduling webpage:

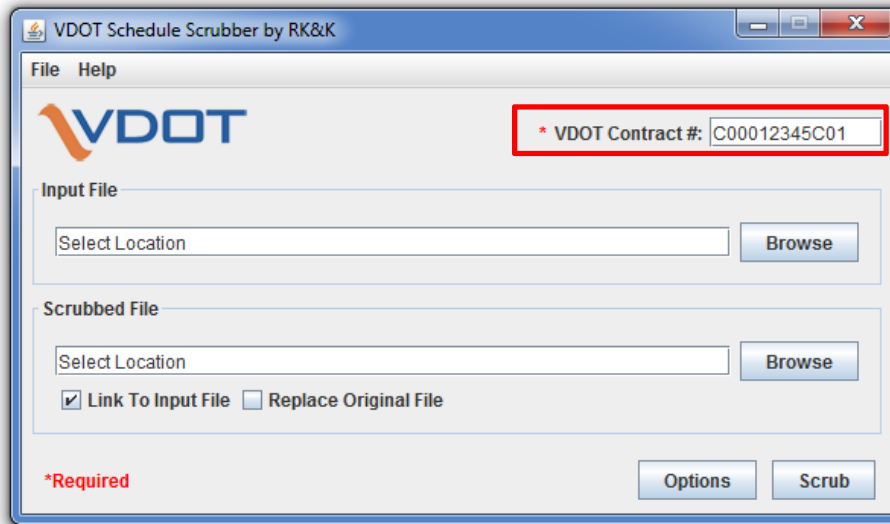
<http://www.virginiadot.org/business/const/ConstrSchResSpecs.asp>

2. Click on the “VDOT Primavera P6 Schedule [Scrubber](#)” link to download a copy of the Scrubber tool.

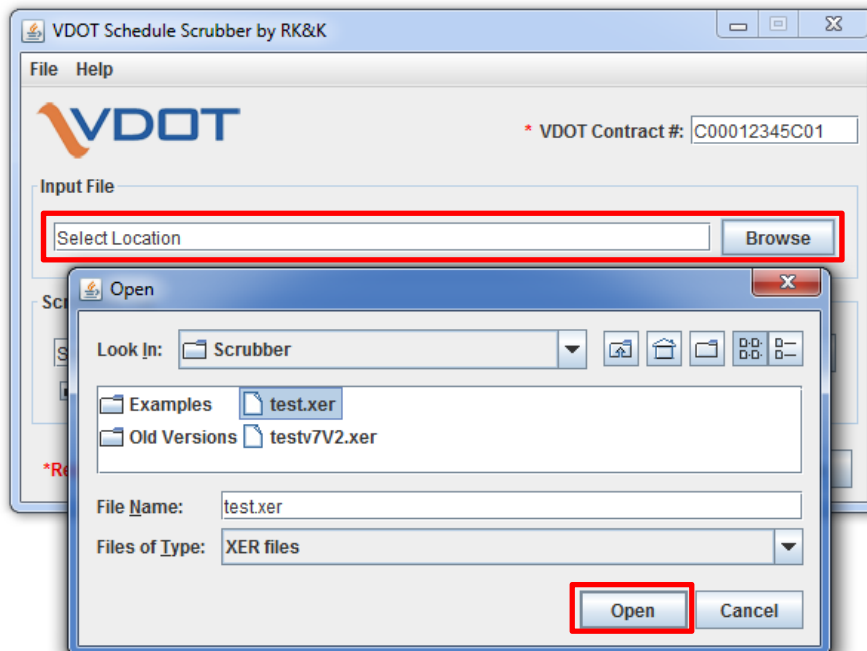
### ► Construction Scheduling

- **Contract Time Determination (CTD) Scheduling**
  - [CD-2007-11](#) (Contract Time Determination CD) (pdf)
  - [FHWA CTD Guidelines](#) (pdf)
  - [VDOT CTD Guidelines](#) (pdf)
  - [VDOT CTD Bar-chart Template](#) (Excel Spreadsheet)
  - [VDOT Production Rates](#) (Excel Spreadsheet)
  - [Other DOT Production Rate Averages](#) (Excel Spreadsheet)
  - [Duralator](#) (Excel Spreadsheet)
- **Post-award Construction Scheduling**
  - [VDOT Post-award Scheduling Guide](#) (pdf)
  - [VDOT Primavera P6 Scheduling Guide](#) 12/22/15
  - VDOT Primavera P6 Schedule [Scrubber](#) 1/12/17 *Zippered*
  - [Project Category](#) (pdf) (Revised 5/31/12)
  - CD-2008-14 (Cat I & II Progress Schedule Specifications) (pdf)
  - [Cat M](#) Special Provision for Schedule of Operations (pdf)
  - [Cat I](#) Special Provision for Progress Schedule (pdf)
  - [Cat II](#) Special Provision for Progress Schedule (pdf)
  - [Cat III](#) Special Provision for Progress Schedule (pdf)
  - [Cat IV](#) Special Provision for Progress Schedule (pdf)
  - [Cat V](#) Special Provision for Progress Schedule [DRAFT] (pdf)
  - [Design-Build Special Provision](#) for Project Schedule (Exhibit 11.1) - 4/18/14

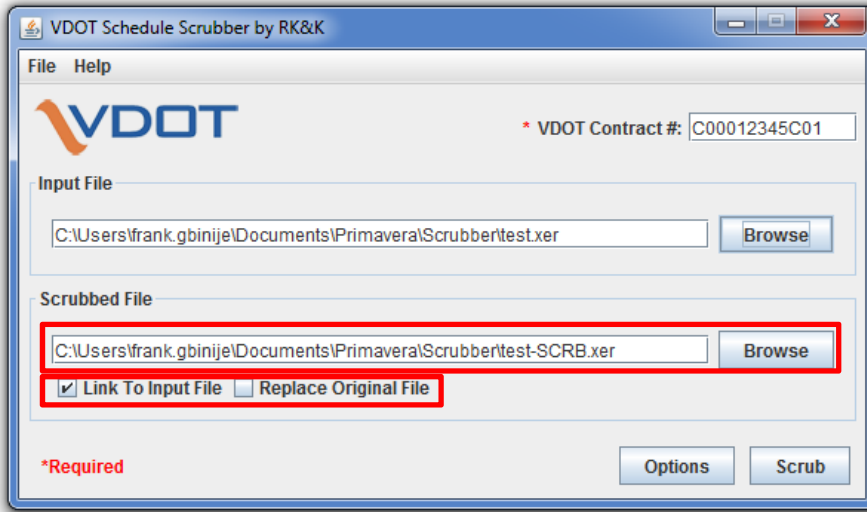
3. Enter the VDOT Contract ID based on the (minimum 12 characters).



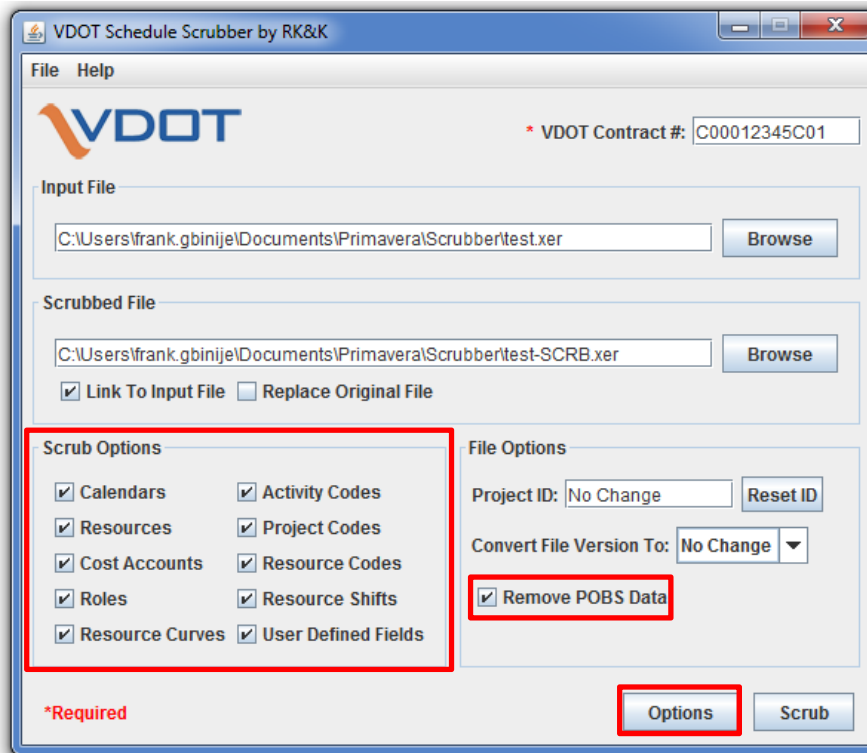
4. Click on the Input File Browse button to search for an XER file to be scrubbed, and then click on the Open button to select the input file.



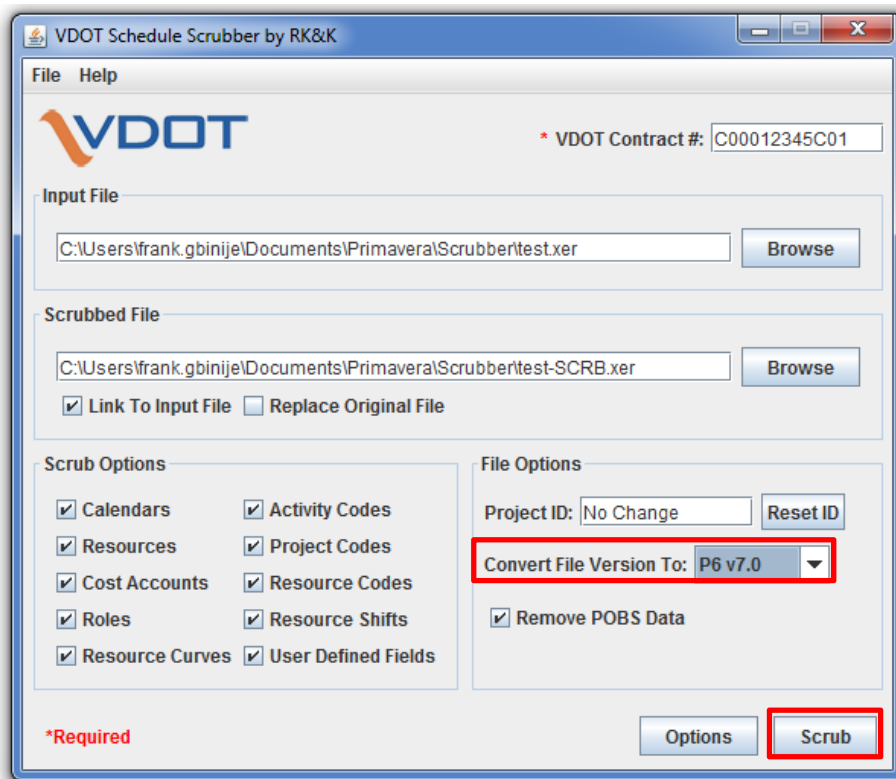
5. Note that the Scrubbed File (output file) is placed in the default location from which the input file was selected, with the original filename appended with “-SCRB”. (Note: Link To Input File is marked by default and the “Replace Original File” box is unmarked to prevent overwriting the original file.



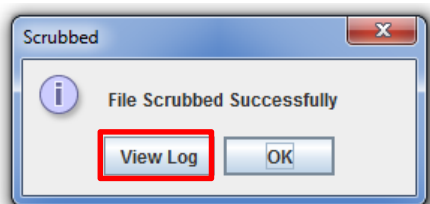
6. Click on the Options button to expand the Options panel to view or specify the scrubbing options. (All options are selected by default). See below for descriptions of the actions performed for each option.



7. If needed, click on the “Convert File Version” box to specify the desired Primavera P6 file version. Click on the “Scrub” button to scrub the XER file.



8. Click on the “View Log” button to view the report showing the revisions to the scrubbed file.



## **Schedule Scrubber Actions Performed:**

### **POBS Data**

1. Remove unnecessary POBS data to reduce the file size and importing time.

### **Project ID**

1. If needed, change the schedule Project ID to the specified ID.

### **Calendars**

1. Remove unused calendars
2. Move Global calendars to the Project and Resource Level, as applicable
3. Rename Resource Calendars
4. Detach project calendars from the Global base calendars from which they were created.

### **Roles**

1. Organize roles under one parent identified by project ID
  - a. If there are multiple parents, a new parent is created and assigned to existing parents.
  - b. If there is one parent, the project ID is attached to the parent ID and name.

### **Resources**

1. Organize resources under one parent identified by project ID
  - a. If there are multiple parents, a new parent is created and assigned to existing parents.
  - b. If there is one parent, the project ID is attached to the parent ID and name.
2. Change Resource Calendars to any new Resource Calendar IDs created from Global Calendars.

### **Resource Codes**

1. Identify Resource Codes with Project ID

### **Project Codes**

1. Identify Project Codes with Project ID

### **Resource Shifts**

1. Identify Resource Shifts with Project ID

### **Resource Curves**

1. Identify Resource Curves with Project ID

### **Activity Codes**

1. Move Global Activity Codes to the project level.

### **Cost Accounts**

1. Organize Cost Accounts under one parent identified by project ID
  - a. If there are multiple parents, a new parent is created and assigned to existing parents.
  - b. If there is one parent, the project ID is attached to the parent ID and name.

### **User Defined Fields**

1. Identify UDF with Project ID

### **Schedule Version**

1. Update schedule version to specified version.

### **Schedule Calculation Options**

1. Analyze Schedule Options for Compliance