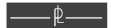






US 360 Arterial Management Plan

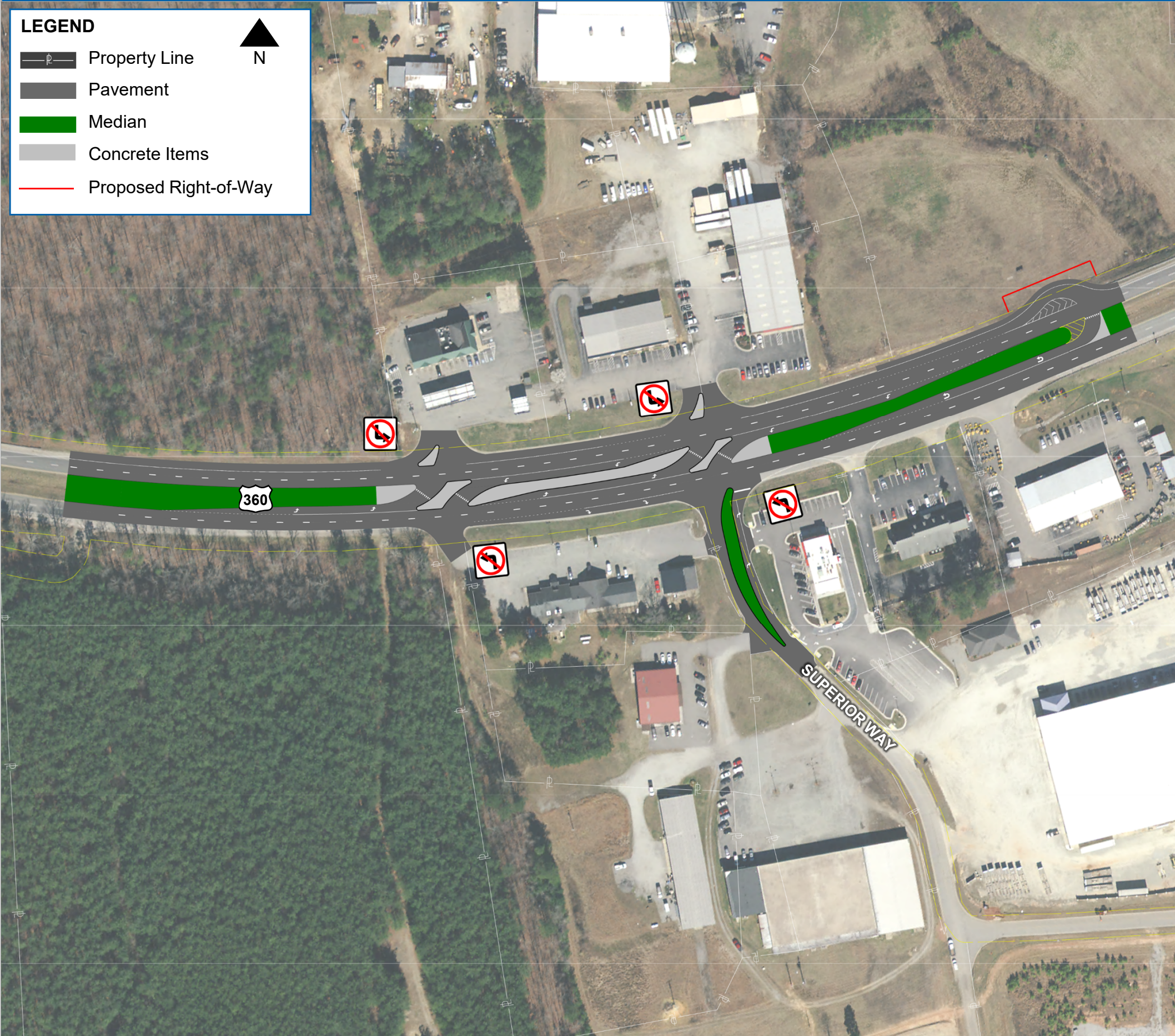
US 360 from US 360 BUS to Goodes Bridge Road | Access Management Improvements

Draft Recommendations

LEGEND

-  Property Line
-  Pavement
-  Median
-  Concrete Items
-  Proposed Right-of-Way

▲
N



Description

This project improves safety and access management along US 360 between US 360 BUS and Goodes Bridge Road by converting two full access median openings to directional medians and closing one median opening.

Safety Benefits

- Reduces conflict points at Superior Way.
- Improves sight distance.

Cost

Preliminary Engineering	\$505,000
Right of Way and Utility Relocation	\$65,000
Construction	\$2,295,000
Total	\$2,865,000